

# Landmark CE GPS Utility Program

*Landmark CE is a GPS utility program that serves as a bridge between a GPS receiver, an Allegro Field PC, and one or more application specific programs*



## LandMark CE Benefits

Provides GPS field support functions such as navigation, GPS satellite status, and position marking with point averaging offset.

Multiple applications can feed from a single GPS receiver data stream.

Directly inserts GPS coordinates into forms, spreadsheets, and other documents via the keyboard wedge feature.

Greatly reduces development time for application software requiring GPS receiver data input.

Recognizing the need for real-time GPS data to be incorporated into custom and third party application software, Juniper Systems developed LandMark CE to manage the GPS receiver connectivity functions and provide services such as navigation, tracking prescribed routes, and recording the position of specific occupied points. Point averaging and offset capabilities are included.

LandMark CE runs concurrently with your main data collection and processing programs. By using a hot key GPS data are sent directly to your application.

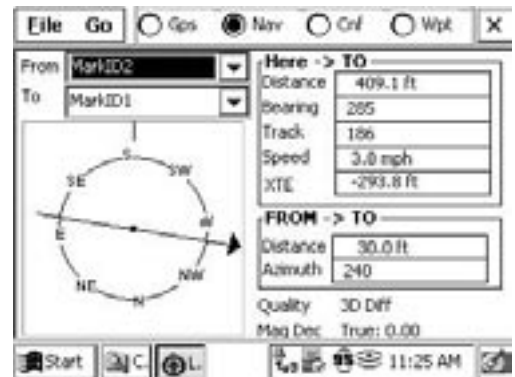


1132 West 1700 North  
Logan, UT 84321 USA

Telephone: 435-753-1881  
Fax: 435-753-1896

## LandMark Features

- Connects with a wide variety of GPS receivers using NMEA data streams.
- Multiple data interfaces to other currently running programs: shared memory, data exchange file, and keyboard wedge.
- Sky plot and satellite signal strength diagrams to keep you informed of GPS status.
- User selectable waypoint files, 256 waypoints per file.
- Marking feature allows averaging of a user specified number of 'fix' readings to be used for an average position and elevation reading.
- Hot key for triggering a "Mark" at any point in time is active in all applications.
- Navigation screens allow you to select to and from waypoints, with a compass depicting travel direction, an arrow designating direction to destination, and data fields showing distance to go, speed, track and bearing with cross-track error.
- User selectable datums and display units (statute, metric, nautical).
- Diagnostics dialogue screens to help when connecting a new GPS receiver.
- Available for embedded deployment in Allegro OEM applications.
- Software is licensed on a per Allegro basis.



## Contact Juniper Systems or our reseller in your area for more information about LandMark CE and the Allegro Field PC.

Copyright 11/2004, Juniper Systems, Inc. Specifications are subject to change without notice. Allegro Field PC, Juniper Systems, Inc., and the company logo are registered trademarks of Juniper Systems, Inc. LandMark CE is a recognized trademark of Juniper Systems, Inc.

a Campbell Scientific Company

Email: [js@junipersys.com](mailto:js@junipersys.com)  
Web: [www.junipersys.com](http://www.junipersys.com)